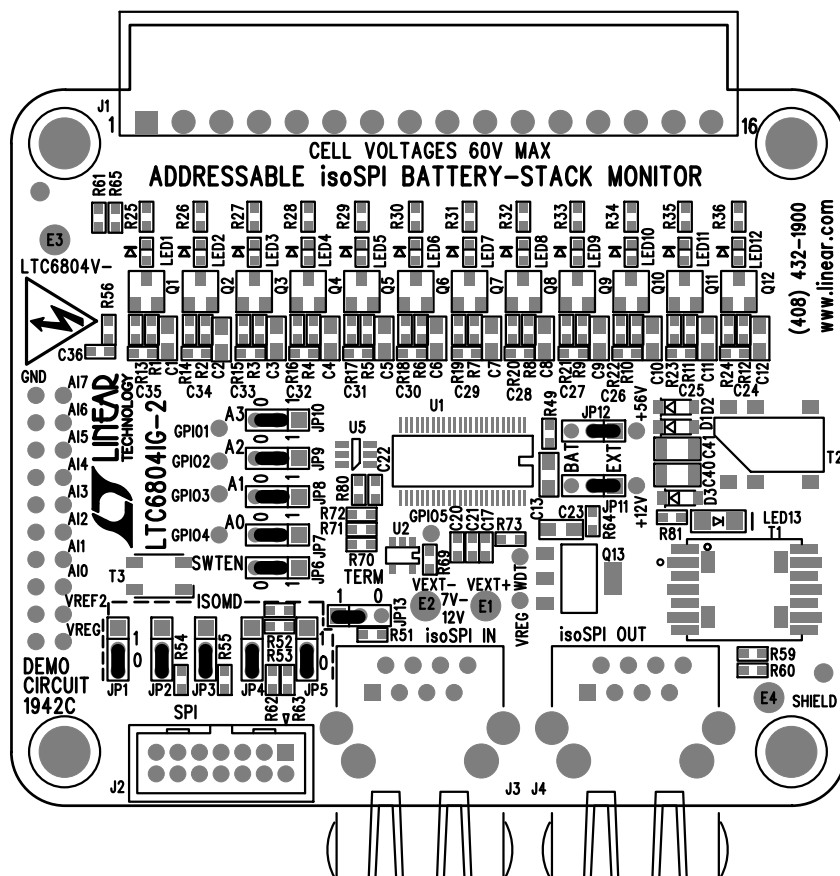
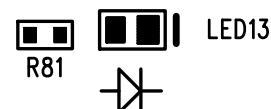



REVISION HISTORY				
ECO	REV	DESCRIPTION	APP. ENG.	DATE
-	1	PRODUCTION	JON M.	07-07-14

## NOTES: UNLESS OTHERWISE SPECIFIED

1. WORKMANSHIP SHALL BE IN ACCORDANCE WITH IPC-A-610.
2. ASSEMBLY PROCESS SHALL INCLUDE: REFLOW SOLDER BOTH SIDE SMD. MAXIMUM SOLDER TEMPERATURE IS 240 DEGREES CELSIUS.
3. PARTS TO OMIT WILL BE SPECIFIED ON THE BILL OF MATERIALS. LOCATIONS OF OMITTED PARTS SHALL BE FREE OF SOLDER. MASK THE SOLDER STENCIL WHERE SMT PARTS ARE OMITTED.
4. INSTALL SHUNTS AS SHOWN ON ASSY DRAWING.
5. DEPANELIZE BOARDS AFTER ASSEMBLY AND ROUTE-OUT THE BREAKOUT TABS ON FOUR SIDES OF THE BOARD EDGE.
6. DO NOT APPLY ANY KIND OF ASSEMBLY STAMP OR QA STAMP TO ANY BOARD.
7. INSTALL LED13 AS SHOWN BELOW:



TOP SILKSCREEN  
 LINEAR TECHNOLOGY DATE: 07-07-14  
 DC1942C-1 LTC6804IG-2  
 ADDRESSABLE isoSPI BATTERY-STACK MONITOR

APPROVALS		 <div>           1630 MCCARTHY BLVD            MILPITAS, CA 95035            PH: (408)432-1900  <a href="http://www.linear.com">www.linear.com</a>            LTC CONFIDENTIAL-            FOR CUSTOMER USE ONLY         </div>		
PCB DES.	AK			
APP ENG.	JON M.	TITLE: TOP ASSEMBLY DRAWING ADDRESSABLE isoSPI BATTERY- STACK MONITOR		
		SIZE	IC NO. LTC6804IG-2	REV.
		N/A	DEMO CIRCUIT 1942C	1
SCALE = NONE		FILENAME: DC1942C-1.PCB		SHT 1 OF 2